



Premier Realty Services, LLC

**ROCHESTER HILLS**  
**9 Acres With M59 Frontage**  
**On Hamlin Road Between**  
**Squirrel & Adams**

**FOR SALE**



**Contact :**

Premier Realty Services, LLC  
32825 Northwestern Hwy.  
Farmington Hills, Mi 48331  
Office: 248.419.5567  
Fax: 248-419-5555  
www.prscre.com



**JOIN :**

**VOLKSWAGEN**



GROUP OF AMERICA

**TRICO**

seeing you through™



**BRIGHT**  
AUTOMOTIVE™



**BorgWarner**



Premier Realty Services, LLC

# ROCHESTER HILLS 9 Acres With M59 Frontage On Hamlin Road Between Squirrel & Adams

# SUMMARY

## Property Highlights

Prime Rochester Hills Land with Excellent M-59 visibility. This Freeway visible site would be ideal for a Corporate Headquarters. Zoned ORT which will allow for Office, Research and Technology. Other allowed uses such as Hotel and Retail are possible with special land use permit. Great access to M-59 and I-75 with exits at Adams and Squirrel Roads. This is the last large parcel of undeveloped land in this corridor!

Possible land lease or build to suit!

## Demographics

	1 Mi	3 Mi
Population	6,550	53,279
Households	2,085	21,139
Average Age	33.60	39.80
Median HH Income	\$78,926	\$77,305

## Traffic

Collection Street	Cross Street	Traffic Vol
M-59	N. Squirrel	92,500
M-59	S. Adams Rd	84,660
S. Adams	M-59	30,451
W. Hamlin	Adams Rd.	27,575

Premier Realty Services, LLC  
32825 Northwestern Hwy.  
Farmington Hills, Mi 48331

Office: 248.419.5567  
Fax: 248-419-5555  
www.prscre.com



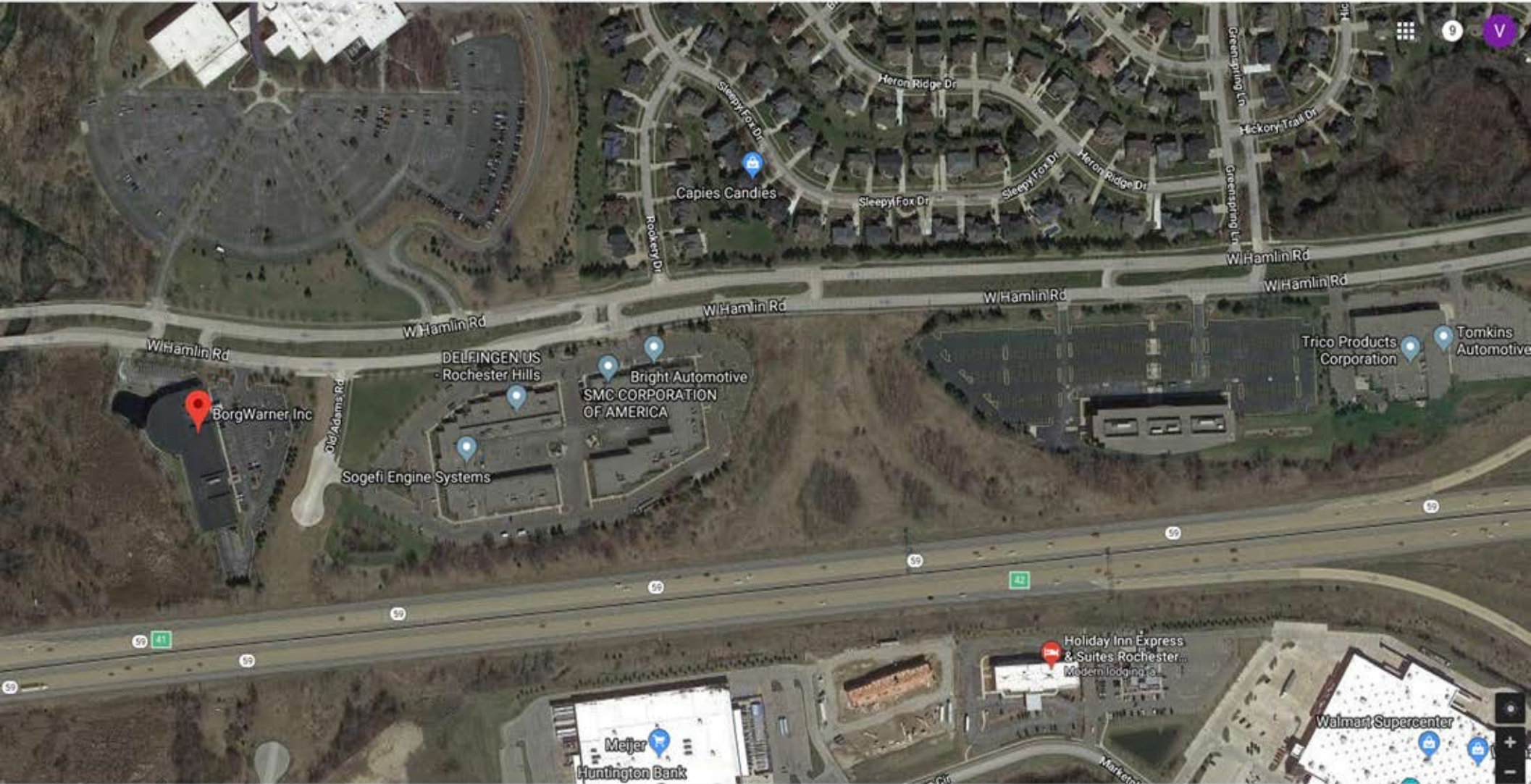




Premier Realty Services, LLC

# ROCHESTER HILLS 9 Acres With M59 Frontage On Hamlin Road Between Squirrel & Adams

# AERIAL MAP



Premier Realty Services, LLC  
32825 Northwestern Hwy.  
Farmington Hills, Mi 48331

Office: 248.419.5567  
Fax: 248-419-5555  
www.prscre.com

VOLKSWAGEN



GROUP OF AMERICA



**BorgWarner**



**TRICO**  
seeing you through

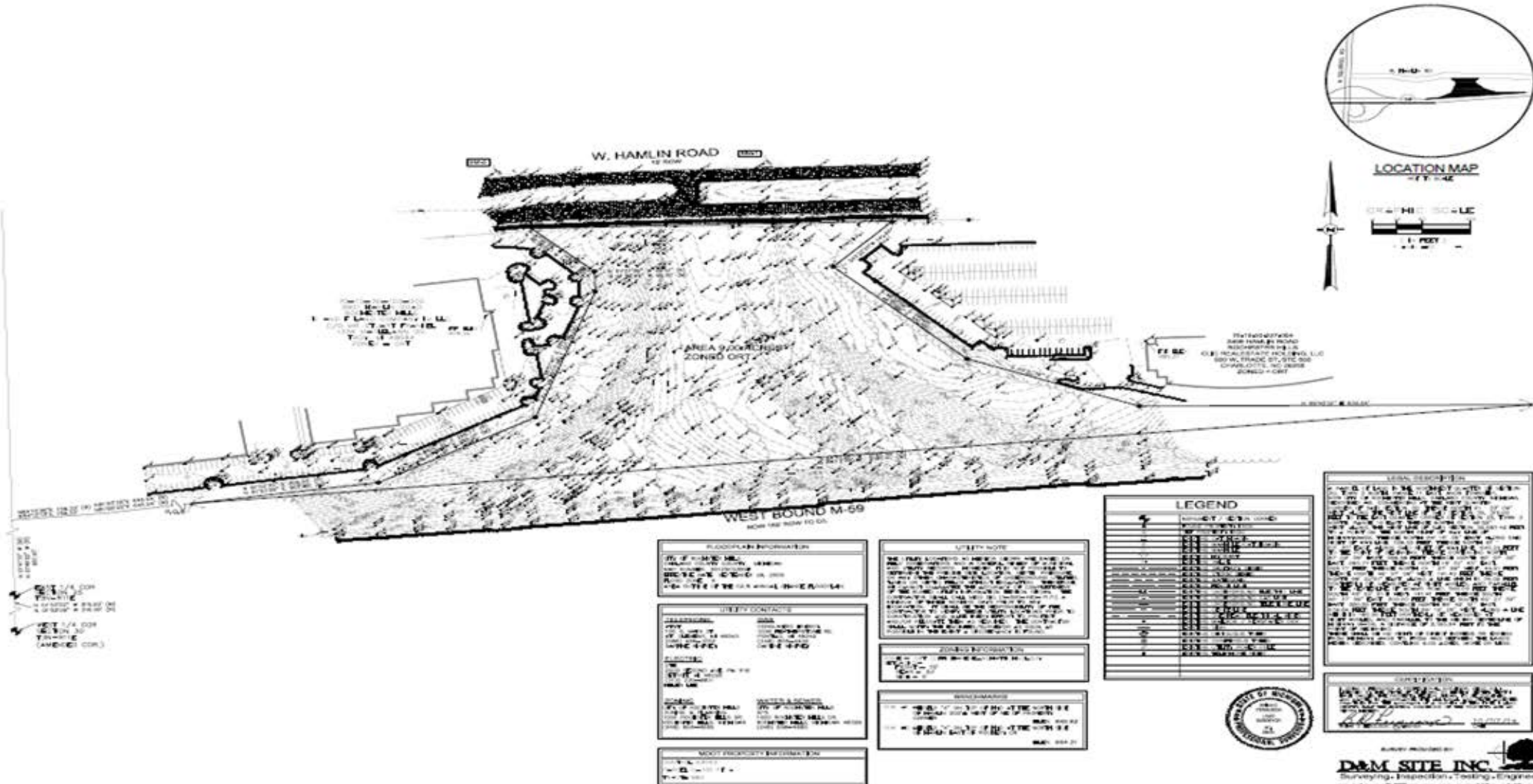




Premier Realty Services, LLC

# ROCHESTER HILLS 9 Acres With M59 Frontage On Hamlin Road Between Squirrel & Adams

# SURVEY



Premier Realty Services, LLC  
32825 Northwestern Hwy.  
Farmington Hills, Mi 48331

Office: 248.419.5567  
Fax: 248-419-5555  
www.prscre.com

VOLKSWAGEN GROUP OF AMERICA  
**BorgWarner** **TRICO**  
seeing you through.