



Premier Realty Services, LLC

New Development Retail Shopping Center

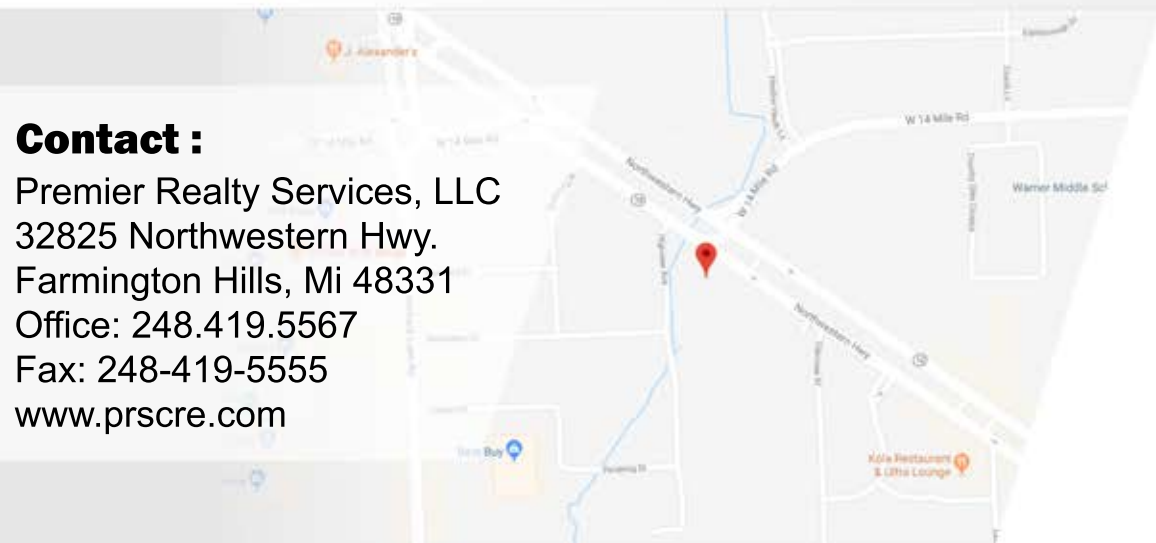
**16850 Southfield Rd. Allen Park, Mi
Drive Thru End Cap Available**

FOR LEASE



Contact :

Premier Realty Services, LLC
32825 Northwestern Hwy.
Farmington Hills, Mi 48331
Office: 248.419.5567
Fax: 248-419-5555
www.prscre.com



JOIN :





Premier Realty Services, LLC

New Development Retail Shopping Center

16850 Southfield Rd. Allen Park, Mi
Drive Thru End Cap Available

SUMMARY

Property Highlights

New construction retail development in the growing city of Allen Park. This new retail center will be an out lot to a new *Towneplace Suites* by Marriott Hotel. This site will feature an end cap with drive thru and an end cap with a patio. The site is in close proximity to many industries and a large employment base. The site is within walking distance of Ford's Allen Park campus. The site will be available for delivery second quarter of 2018.

Demographics

	1 Mi	3 Mi
Population	12,642	120,710
Households	5,128	48,964
Average Age	39.90	39.90
Median HH Income	\$56,306	\$49,448
Daytime Employees	4,444	39,097

Traffic

Collection Street	Cross Street	Traffic Vol	Year	Distance
Southfield Rd	Norwood Ave SE	67,918	2012	0.16 mi
Southfield Fwy	Norwood Ave SE	59,700	2016	0.16 mi
Southfield Fwy	State St SE	56,932	2016	0.19 mi
I-94	Southfield Fwy W	7,484	2010	0.26 mi
Detroit Industrial	N M-39 Cd W	48,704	2012	0.26 mi

Premier Realty Services, LLC
32825 Northwestern Hwy.
Farmington Hills, Mi 48331

Office: 248.419.5567
Fax: 248-419-5555
www.prscre.com



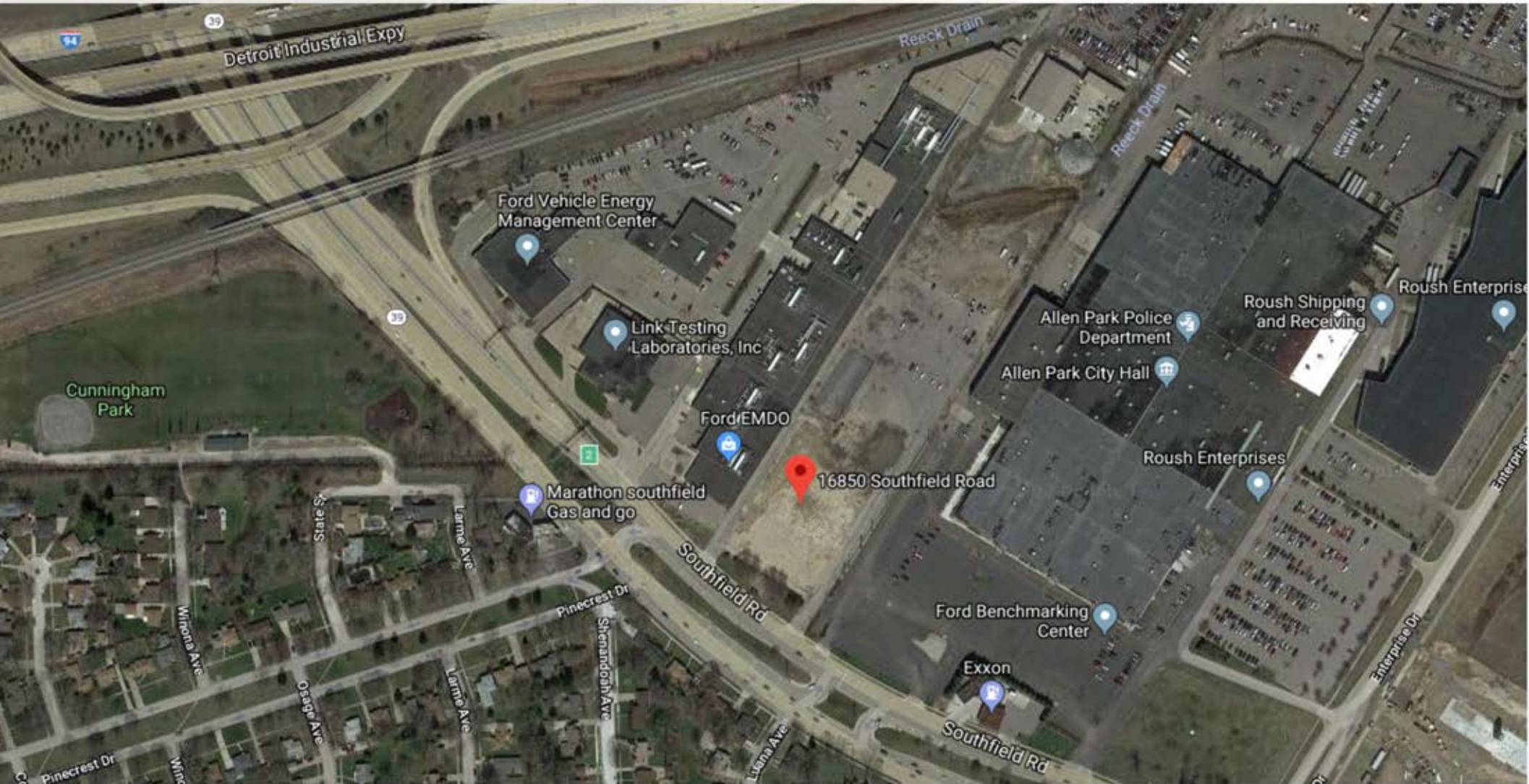


Premier Realty Services, LLC

New Development Retail Shopping Center

16850 Southfield Rd. Allen Park, Mi
Drive Thru End Cap Available

AERIAL MAP



Premier Realty Services, LLC
32825 Northwestern Hwy.
Farmington Hills, Mi 48331

Office: 248.419.5567
Fax: 248-419-5555
www.prscre.com



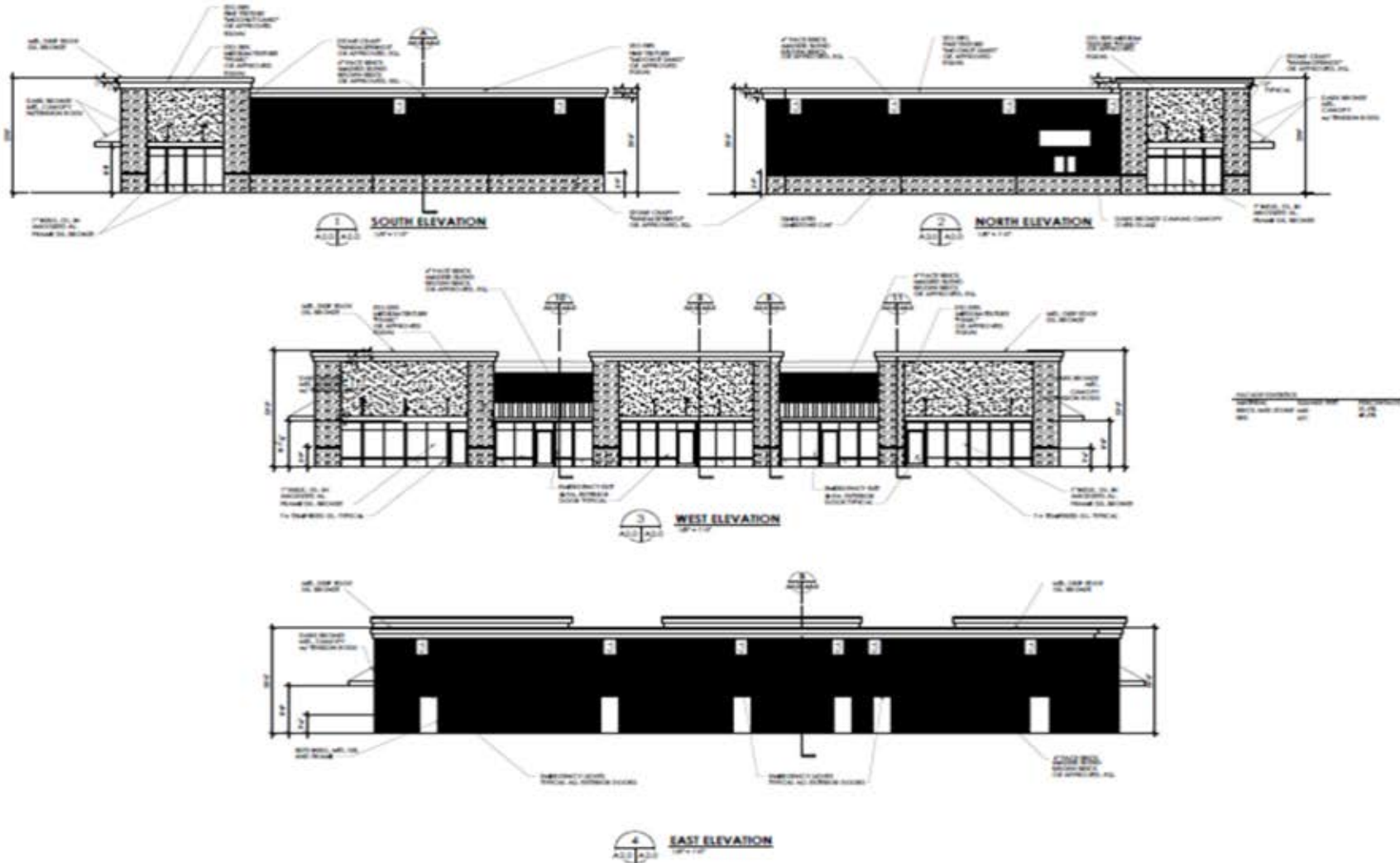


Premier Realty Services, LLC

New Development Retail Shopping Center

16850 Southfield Rd. Allen Park, Mi
Drive Thru End Cap Available

ELEVATION



Premier Realty Services, LLC
32825 Northwestern Hwy.
Farmington Hills, Mi 48331

Office: 248.419.5567
Fax: 248-419-5555
www.prscre.com



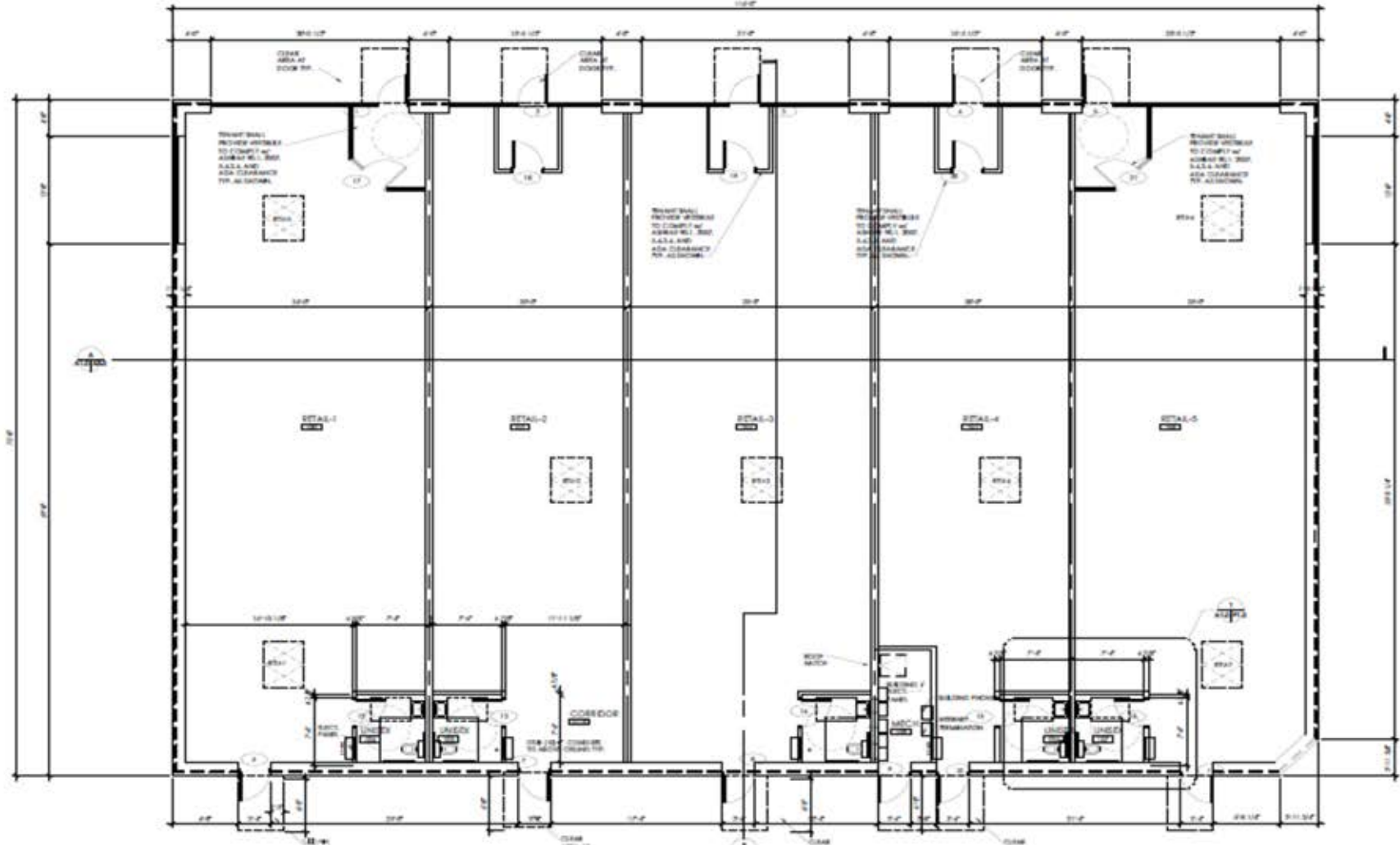


Premier Realty Services, LLC

New Development Retail Shopping Center

16850 Southfield Rd. Allen Park, Mi
Drive Thru End Cap Available

BUILDING



Premier Realty Services, LLC
32825 Northwestern Hwy.
Farmington Hills, Mi 48331

Office: 248.419.5567
Fax: 248-419-5555
www.prscre.com



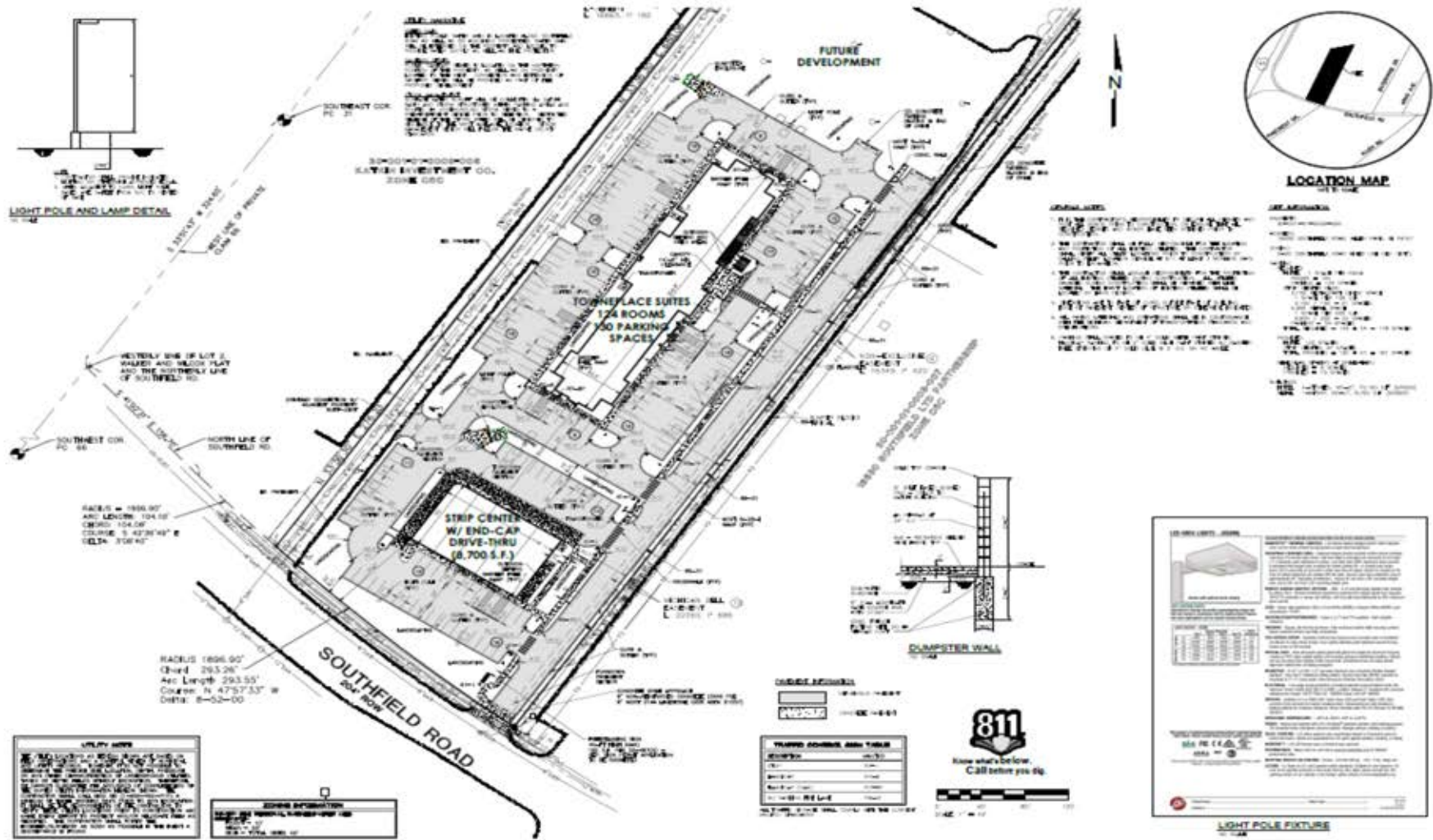


Premier Realty Services, LLC

New Development Retail Shopping Center

16850 Southfield Rd. Allen Park, Mi
Drive Thru End Cap Available

BUILDING



Premier Realty Services, LLC
32825 Northwestern Hwy.
Farmington Hills, Mi 48331

Office: 248.419.5567
Fax: 248-419-5555
www.prscre.com





Premier Realty Services, LLC

Premier Realty Services, LLC
32825 Northwestern Hwy.
Farmington Hills, Mi 48331
Office: 248.419.5567
Fax: 248-419-5555
www.prscree.com